

## Parts List

Part Number	Description	Quantity
150100	Quick Attach Keeton Bracket Assembly	1
160042	Hardware Kit	1
<b>Included Hardware</b>		
0142876	8 X1.25" Plastite Screw	3

**Compatible with WaveVision® sensors or other seedtubes/sensors**

### 1) Row Unit Preparation

- a) Raise the planter and remove both gauge wheels and disc openers from the row unit.
- b) Inspect the seed tube guard and seed tube. If these are worn, replace them now while they are easily accessible. Remove the seed tube for easier installation.
- c) Remove all disc opener shims.

### 2) Quick Attach Firmer Bracket Installation

- a) Locate the bracket pieces and cut the zip tie securing them together. Refer to illustration 1.

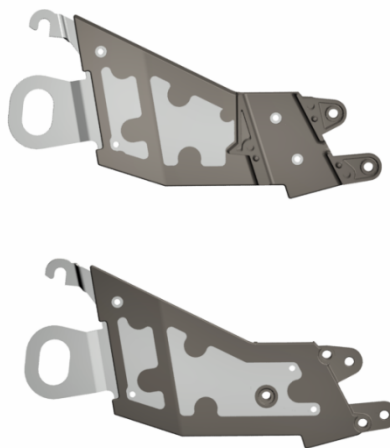


Illustration 1 – Quick Attach Firmer Bracket

- b) Slide the eyelet on each half of the firmer bracket onto the respective opening disk shaft. Refer to illustration 2 on next page.

Contact SI Distributing with Questions: 800-368-7773

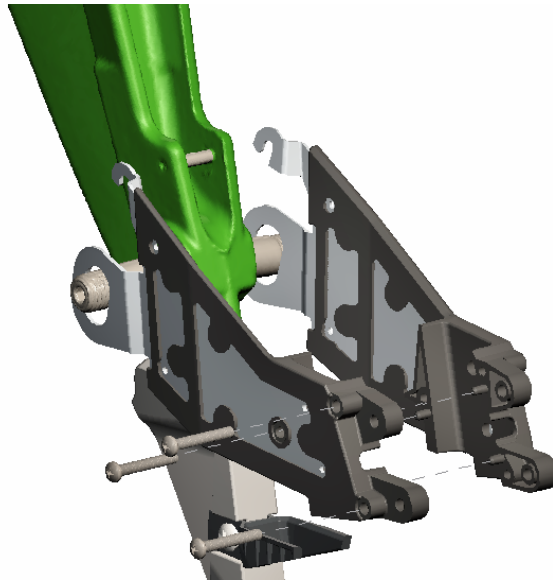


Illustration 2 – Align Quick Attach Firmer Bracket

- c) Secure the upper bracket hooks to the lower seed tube pin on the shank and assemble the bracket pieces with the three (3) supplied #8 X 1.25" screws. Refer to illustration 3.

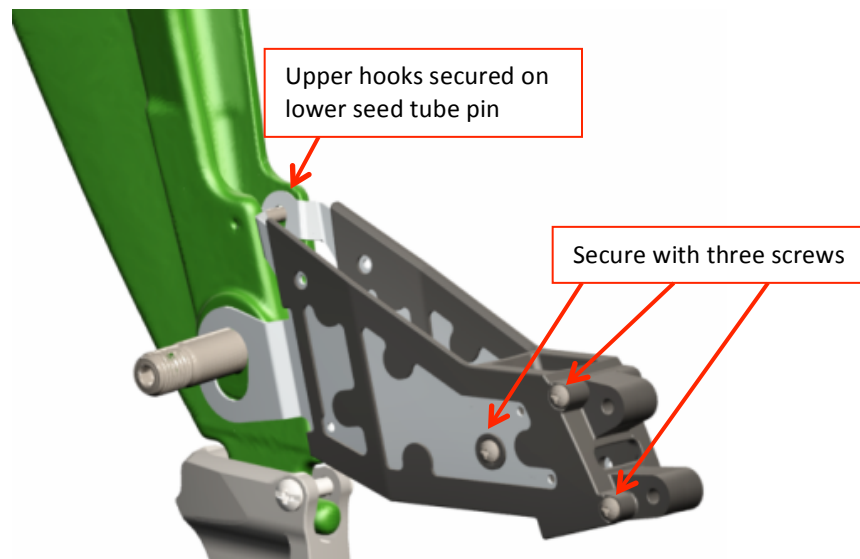


Illustration 3 – Quick Attach Keeton Firmer Bracket Installed

### 3) Installation Completion

- Reinstall the seed tube and ensure it is fully seated on lower pin.
- Reinstall the opening disks with 1.5"-2" of contact (check multiple locations). Shim disks as necessary. Ensure firmer bracket remains fully seated on the lower seed tube pin when tightening.

**Note: The Keeton bracket eyelets will serve as a shim for each disk. General recommendation would be one less shim (per side) than previously installed. Install shims outside of firmer bracket.**

c) Reinstall both gauge wheels according to Manufacturer's instructions.

**Setting the Contact between the Disk Openers:** To check disk contact, use two pieces of paper and slide one piece in from the top of the disk openers and one from the bottom. Then slide them in toward each other, until they pinch between the disk openers. Measure the distance between the two pieces of paper. If the gap is too wide, you will need to add a shim to the disk opener. If the gap is too narrow you will need to remove a shim. Adjust shims as needed to get the correct contact as stated in the planter manual.

**Note:** To improve the seed trench “vee”, make sure the opener disks are not worn. If the diameter is less than listed, replace them.

- John Deere – 14.5”

**Correct Contact Between Disk Openers**

3.0 mm blade thickness – 1.5”–2.5”

3.5 mm blade thickness – 1”–1.5”

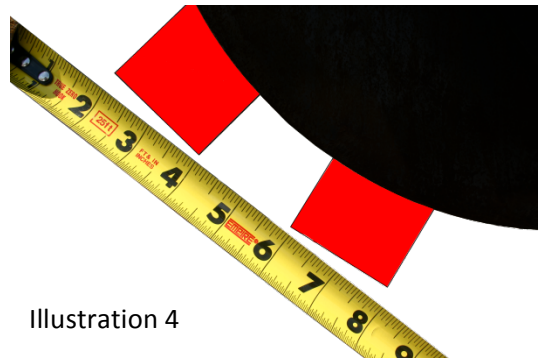


Illustration 4

Contact SI Distributing with Questions: 800-368-7773

Compatible with Quick Attach Brackets KTN150109, KTN150110, and KTN150111

**Note:** All quick attach tails are capable of applying liquid, if liquid will not be applied through the tail skip to step 2.

### 1) Liquid Tubing Installation

- a) Locate the ¼" tubing, liquid insert, and splitter (if applicable).

**Note:** The liquid splitter is pre-installed in the liquid insert. The splitter can be removed if use is not desired. Refer to illustration 1.

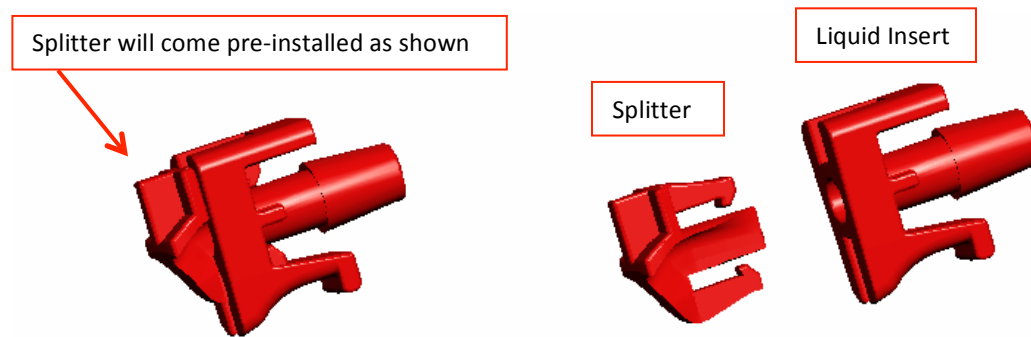


Illustration 1– Liquid Insert

- b) Install the liquid insert assembly into one end of the ¼" tubing. Refer to illustration 2.

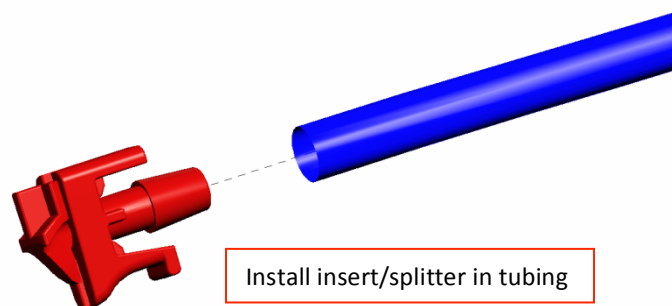


Illustration 2– Insert Assembly Installed in Tubing

Contact SI Distributing with Questions: 800-368-7773

- c) Slide the other end of the tubing through the bottom opening of the tail. Continue feeding the tubing up through the tail, securing it with the two molded hooks. Finish by sliding through the open hole at the top of the tail. Refer to Illustration 3.

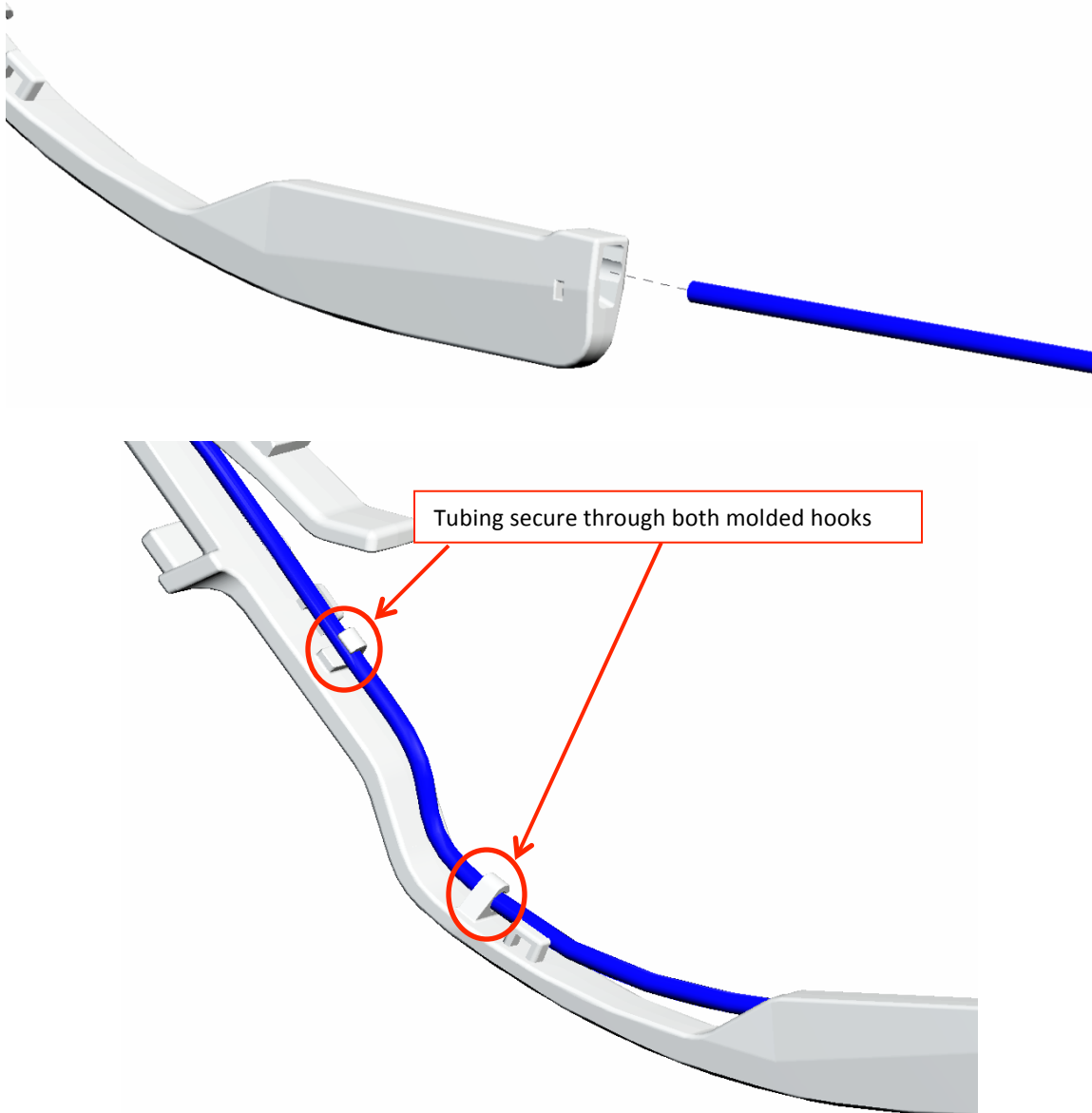


Illustration 3 – Insert Tubing in Firmer

- d) Snap the liquid insert into the open area at the bottom of the tail. Refer to illustration 4. To remove the liquid insert, push a small flat head screw driver (or similar tool) into one of the openings on the side of the tail and pop the insert out.

**Note: Do not install the insert into the tail first and then attach the liquid tubing to the insert. There will not be sufficient leverage to install the tubing over the barb on the insert and the tubing will bind.**

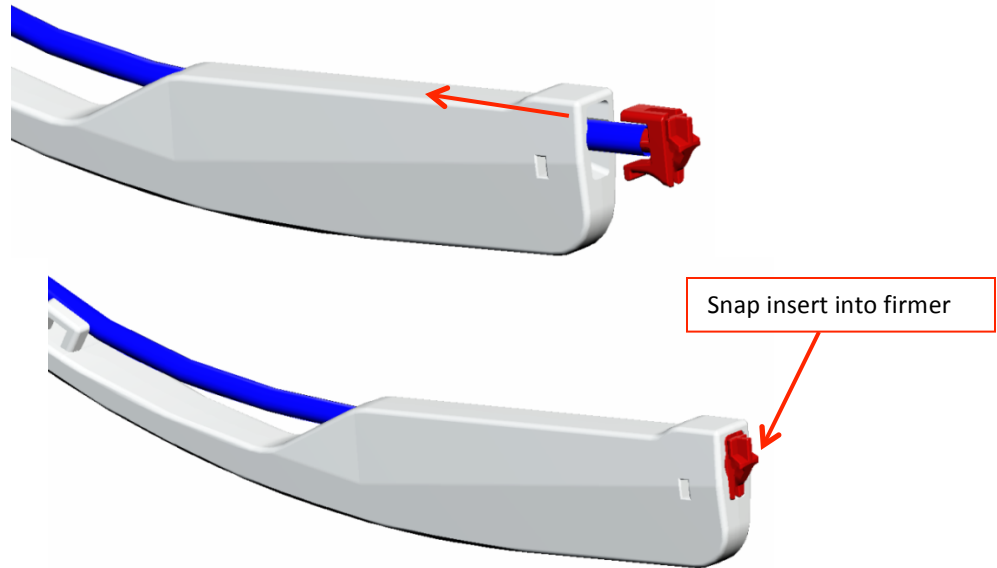
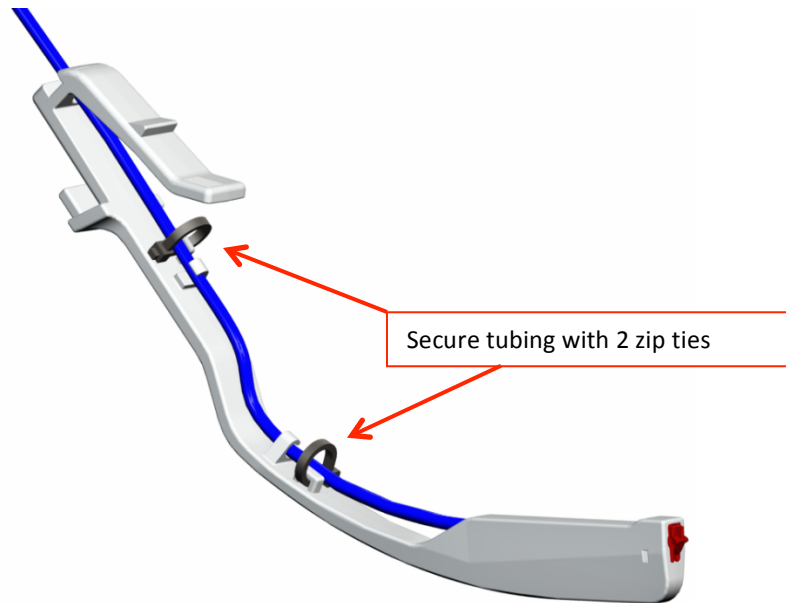


Illustration 4 – Insert installed in firmer

- e) Use the 2" long splice to connect the firmer liquid tubing to the liquid supply line from the manifold.  
f) Use the provided zip ties to secure the tubing to the firmer. Refer to illustration 5.



## Illustration 5 – Liquid Tubing Secured with Zip Tie

### 2) Tail Installation and Removal

- a) Insert the tail into the rear opening on the quick attach bracket. A snap should be heard when fully installed. Pull on the tail to make sure it is securely installed. Refer to illustration 6.

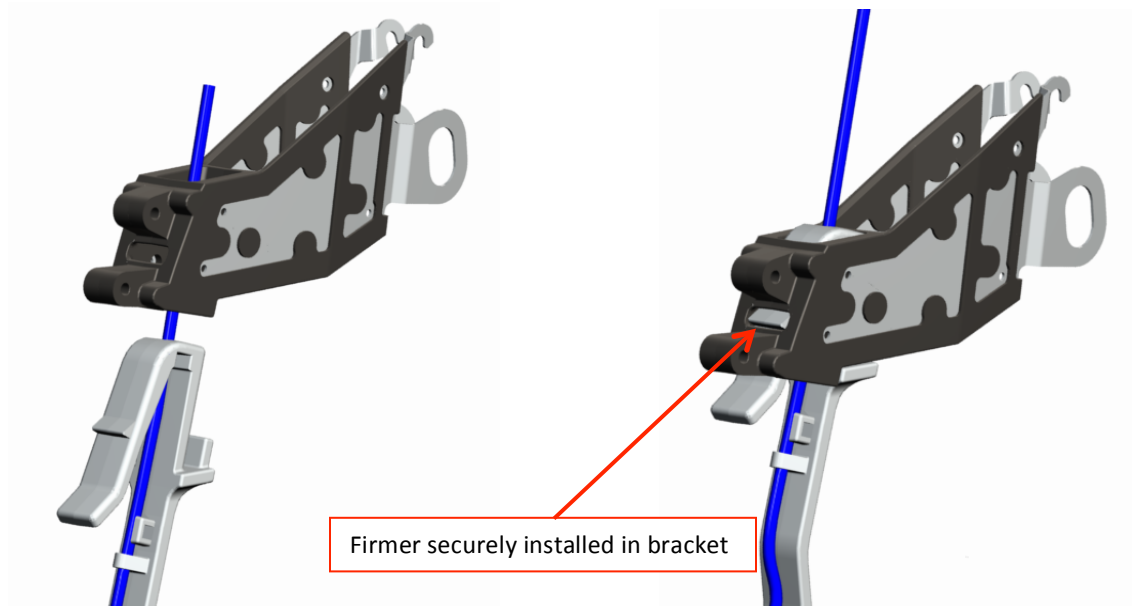


Illustration 6 – Firmer installed in bracket

- b) To remove the tail, simply depress the tab on the tail and pull down and out of the bracket.

As noted above, all quick attach tails have the ability to apply liquid. The new splitter has a larger diameter and can apply much higher rates than the previous splitter model.

- **An in-line orifice must be installed on each row to regulate flow to each row**
- **Orifice sizes should be determined by calibrating the planter and utilizing manufacturer's charts and calculators for target application rate**

**Note:** Backing up without the planter fully lifted can result in damage to the firmer. To prolong tension, the firmers should be stored not touching the ground between planting seasons.

Contact SI Distributing with Questions: 800-368-7773