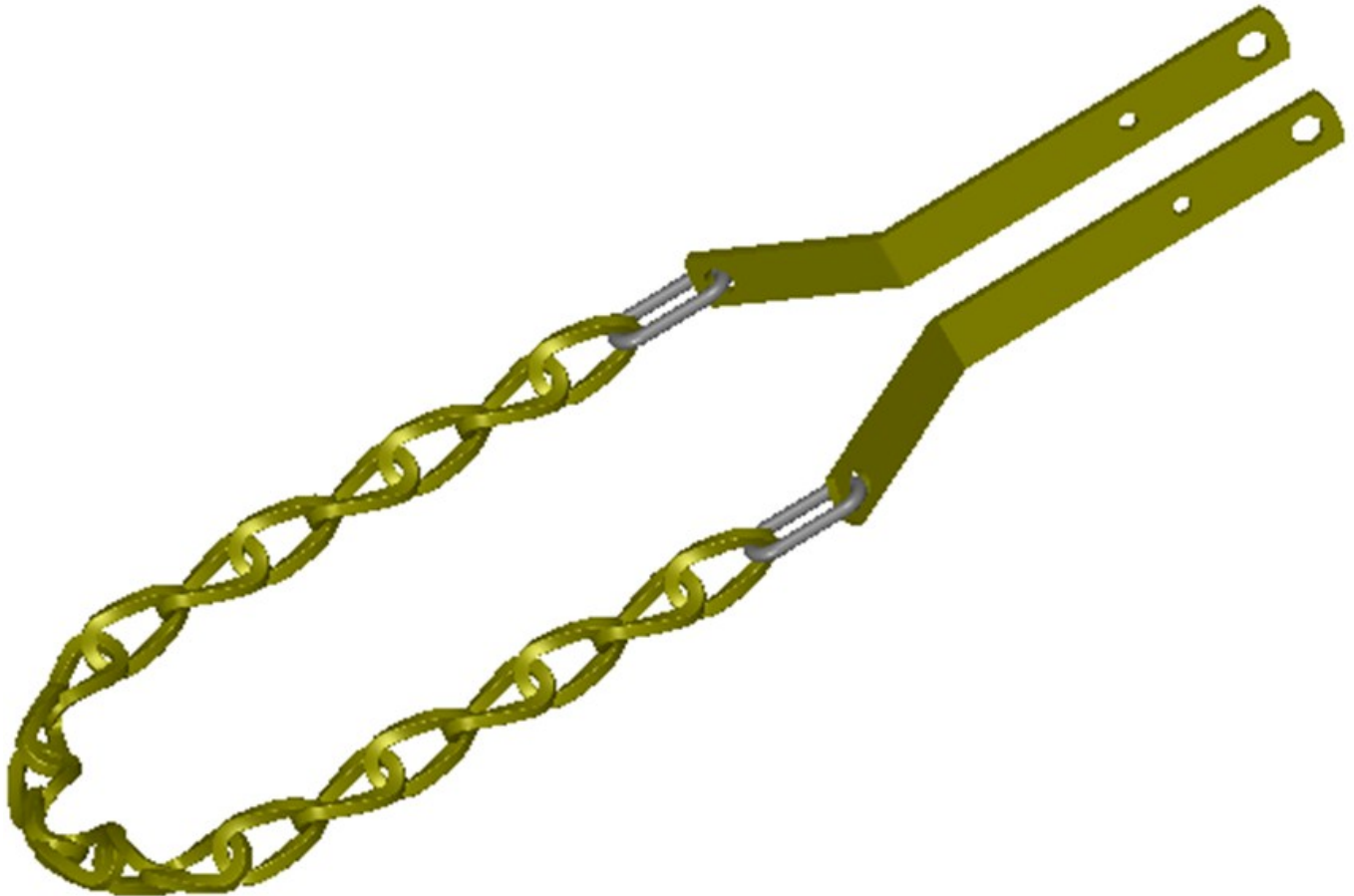


DCK-01

Drag Chain Kit

Installation Instructions



Martin Planter Attachments

Martin Industries LLC

206 Elk Fork Road

Elkton, KY 42220

Telephone: 270-265-5817

E-Mail: martin@martintill.com

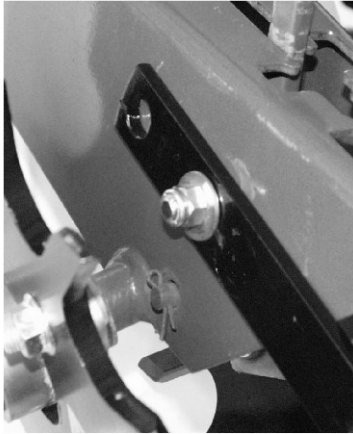
www.martintill.com



ATTACHING THE DRAG CHAIN KIT TO THE CLOSING ARM

Arm with Holes Provided

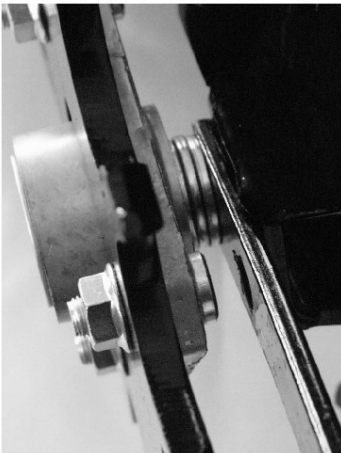
- 1) Attached brackets as shown in picture below using the 3/8" x 1 1/4" hex bolt, flat washer, and nyloc nuts. (B5M38114) (W38F) (N38CNL)
- 2) Securely tighten nuts.



(A)

Arms with Bolt-on Hubs

- 1) Discard two of the flat washers and install the brackets as shown in the picture below.
- 2) Securely tighten nuts.



(B)

ADJUSTING

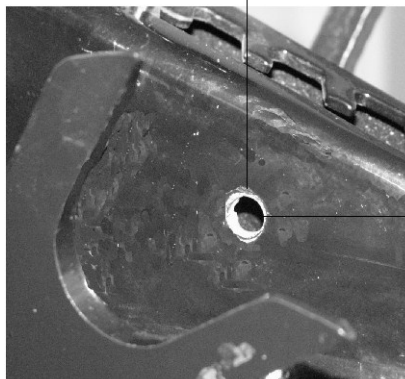
- 1) Position arm to carry front of chain about 3" to 4" above soil.
- 2) Securely tighten nuts.

For best soil leveling, keep the front end of the chain as low as possible while maintaining clearance above the soil for the bracket ends.

Arms Without Holes or Bolt-on Hubs

- 1) Drill a hole with sufficient clearance for a 3/8" bolt on each side of arm.
- 2) Locate hole as shown in picture.
- 3) Using 3/8" x 1 1/4" hex bolt, flat washer and nyloc nut, attach the brackets as shown in photo (A).
- 4) Securely tighten nuts.

1" down



(C)

2 1/2" over